

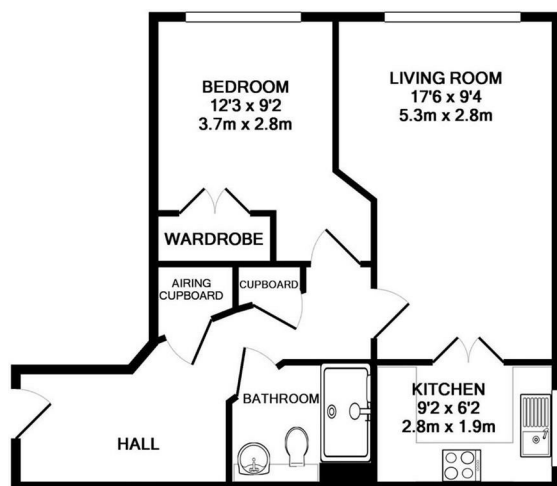


39 Ashcroft Place, Epsom Road, Leatherhead, KT22 8RJ

Asking Price £200,000

- FIRST FLOOR RETIREMENT FLAT
- KITCHEN WITH INTEGRATED APPLIANCES
- SPACIOUS DUAL ASPECT LOUNGE
- RESIDENTS LOUNGE
- RESIDENTS AND VISITORS PARKING
- 1 BEDROOM
- WHITE BATHROOM SUITE
- LIFT SERVICE
- GUEST SUITE
- END OF CHAIN

With a southerly aspect, a first floor apartment built in 2006/7 exclusively for the over 60's. With electric gated entrance, security video entrance phone on-site manager (mornings only) and optional 24 hour remote emergency call system. There is also a residents' lounge, lift service, private and visitors parking, communal buggy store and a visitors guest suite. The flat includes hall, large lounge/dining room, quality fitted kitchen with integrated appliances and white bathroom suite. The kitchen and bathroom have also just had newly fitted tiled floors. Service charge includes water rates. End of chain.



TOTAL APPROX. FLOOR AREA 521 SQ.FT. (48.4 SQ.M.)

Whilst every attempt has been made to ensure the accuracy of the floor plan contained here, measurements of doors, windows, rooms and any other items are approximate and no responsibility is taken for any error, omission, or mis-statement. This plan is for illustrative purposes only and should be used as such by any prospective purchaser. The services, systems and appliances shown have not been tested and no guarantee as to their operability or efficiency can be given
Made with Metropix ©2019

Tenure
Lease
Service Charge
Ground Rent

EPC
Council Tax Band

Leasehold
999 yrs from 01.01.06
£2,760 for y/e 31.12.22
£295 p.a. increasing
by £295 every 25 yrs
B
D



1-3 Church Street, Leatherhead, Surrey, KT22 8DN
Tel: 01372 360078 **Email:** leatherhead@patrickgardner.com
www.patrickgardner.com

These particulars, whilst believed to be accurate are set out as a general outline only for guidance and do not constitute any part of an offer or contract. Intending purchasers should not rely on them as statements of representation of fact, but must satisfy themselves by inspection or otherwise as to their accuracy. No person in this firm's employment has the authority to make or give any representation or warranty in respect of the property.

